

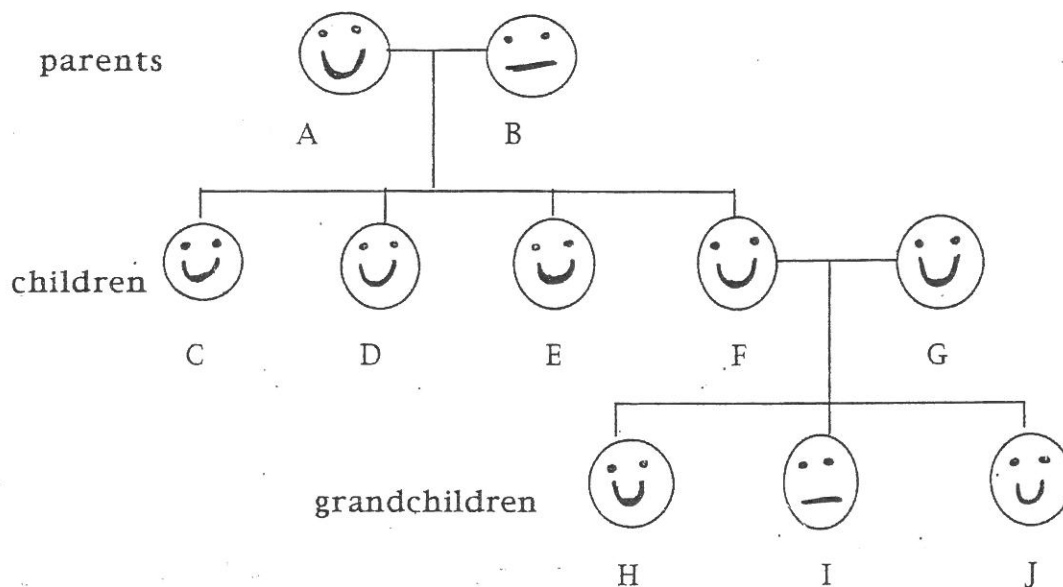
Genetics Problems

① The ability to roll the tongue is inherited. In the following family tree:

Tongue rollers are represented by ☺

Non-tongue rollers are represented by ☹

Both parent A and parent B are homozygous



Is tongue rolling dominant or recessive ? _____

Explain how you figured that out (which individuals let you know)

Using R = roller & r = non roller

Give the genotypes of :

Person A _____

Person B _____

Person F _____

Person G _____

Person I _____